

R8 Coupe 4.2 FSI quattro R tronic



R8 Coupe

Engine

4.2 FSI quattro R tronic

Power: 430 BHP

Combined fuel consumption: 21.2 mpg

Combined CO₂ emissions: 310 g/km (EU4)

Urban consumption: 14.1 mpg

Extra urban consumption: 30.1 mpg

Exterior

Brilliant red (Brilliant red side blade)

Interior

Material: Fine Nappa leather upholstery

Seats: red

Dashboard: black-black

Carpet: black

Headliner: black

Equipment

Electric front seats



Standard equipment

Equipment packages

Fina Nappa leather upholstery on door trims and door handles



Exterior

4-branch exhaust system - twin tailpipes on left and right

Bi-Xenon Plus headlights

Brake lights with LED technology



Delete engine tech designation

Door mirrors - electrically operated and heated



Ext mirrors - bodycolour

Exterior lighting, including exit lights

Headlight washer system

High-gloss package

LED daytime-running lights

Scuff plates in aluminium with R8 logo



Windscreen washing system

Windshield in heat-insulating glass

sideblade tone-on-tone

Tyres

19" 5-arm double-spoke design alloy wheels



8.5J x 19 front and 11J x 19 rear with 235/30 and 295/30 tyres

Locking wheel bolts

Tool kit and car jack

Tyre Mobility System



Without special tyre fitting

Interior

Cup holder - two compartments integrated into centre console

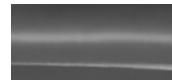
Electronic climate control



First aid kit with warning triangle

Information kit in English

Inlays in Micrometallic grey



Mph speedometer, clock, tachometer and trip odometer

Valet key

Steering wheels

3-spoke flat-bottomed, leather covered multi-function steering wheel (gear-change via paddles standard with R tronic transmission)



Aluminium gear knob and lever gate

Seats

Electric lumbar support



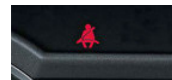
ISOFIX, with front-passenger airbag-deactivation switch

Manual height adjustment for seats

Replaced by: Front seats, electrically adjustable (contained in Electric front seats)



Seatbelt reminder



Sports seats



Without special color trim

Seats & seat upholstery

Fine Nappa leather upholstery



Safety & technology

Anti-theft device and immobilisor

Disc brakes, internally vented, 4-piston brake callipers at rear

Disc brakes, internally vented, 8-piston brake callipers at front

Driver and front passenger airbags

Driver's Information System

Energy recovery

Front side airbags



Fuel tank - 90 litres

Prep for tracking system

Remote central locking

Audio & communication

7 loudspeakers and 5-channel amplifier. Total output 140 Watts



Without CD changer/CD player

concert radio



Other

Fuel quality 98 RON

Increase in initial standard fuel filling

Rear exhaust tailpipe (standard)

Technical data

Performance data

Displacement, cc	4163
Max. output, kW (PS) at rpm	316 (430)/7900
Max. torque, Nm at rpm	430/4500-6000

Weights

Unladen weight	1565 Kg
Roof load limit/nose weight limit	-/- Kg

Trailer weight limit

unbraked	- Kg
at 12% gradient	- Kg
at 8% gradient	- Kg

Volumes

Fuel tank, approx.	90 Litres (approx.)
Top speed	187 mph
Acceleration 0-62 mph	4.6 Seconds

Fuel consumption (93/116/EU)

Urban	14.1 mpg
Extra urban	30.1 mpg
Combined	21.2 mpg
CO ₂ emissions	310 g/km
Emission class	EU4

Moderncar have taken steps to ensure that all the product information and pricing ("product specification") featured on moderncar.co.th is accurate and up-to-date. However, the product specifications contained on this web site are for information purposes only, as our products are continually updated and Moderncar reserves the right to change the product specifications at any time without notice. Therefore all product specifications should be confirmed with your sales person. If you require any specific feature you should consult your Moderncar, which is regularly updated with any changes in product specification.

Images and photographs on this site are for general guidance only. They do not necessarily illustrate the UK specifications of the cars or any other products.